

CREATE
YOUR STYLE with
CRYSTALLIZED™
-Swarovski Elements

DESIGN PROJECT
SUMMER HOLIDAYS
CHAIN MAIL RING



SUMMER HOLIDAYS CHAIN MAIL RING



CRYSTALLIZED™ – Swarovski Elements

Supplies & Tools

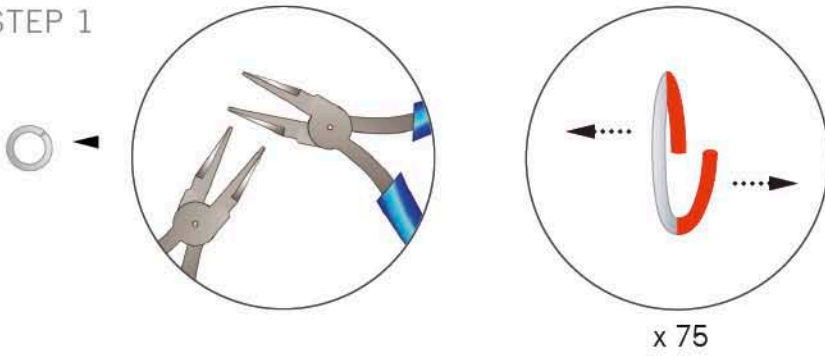
Article	Product Group	Article No.	Amount	Size	Colour	Colour Code
	Beads	5000	9 pcs.	4 mm	Air Blue Opal	285
	Crystal Pearls	5810	1 pc.	10 mm	Crystal Platinum Pearl	001 459
	Pendants	6007	9 pcs.	9x5 mm	Light Sapphire	211

- Supplies**
 99x Jump rings, 6 mm, silver,
 Wire, 0.25 - 0.3 mm, silver, 45 cm
- Tools**
 Flat nose pliers
 Needle
 Side cutter

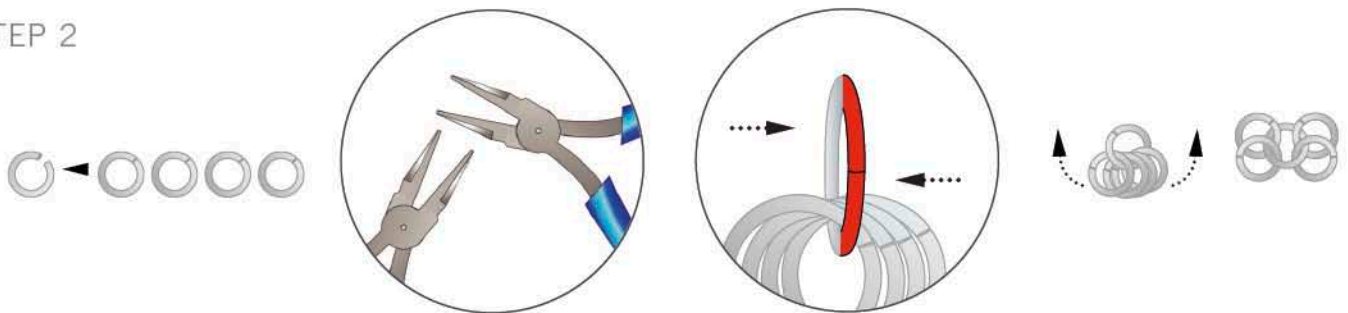
Level of design: **ADVANCED**

Have also a look at the **text instruction** at the last page!

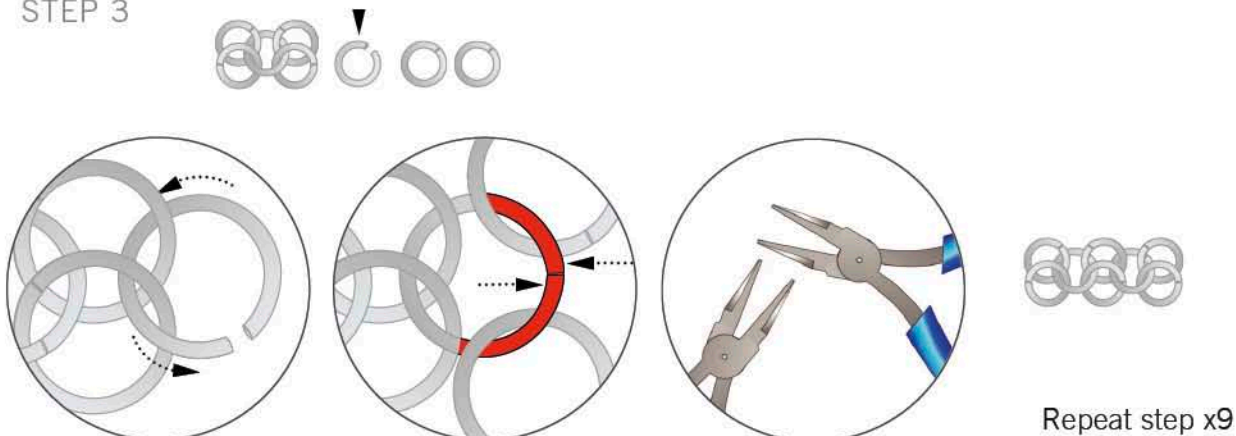
STEP 1



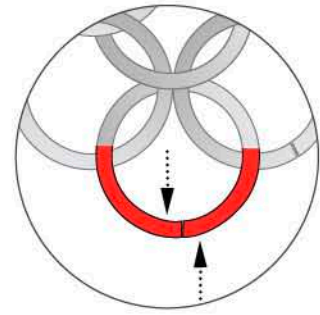
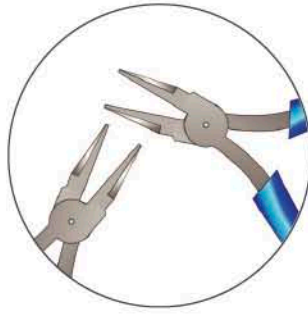
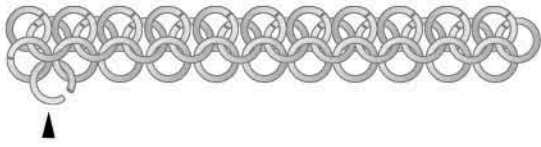
STEP 2



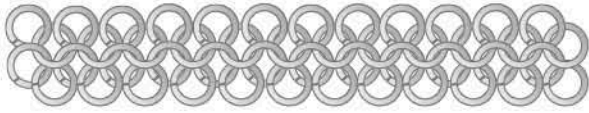
STEP 3



STEP 4

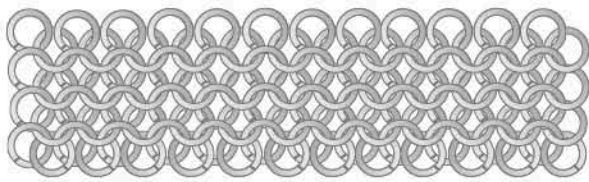


Repeat x11

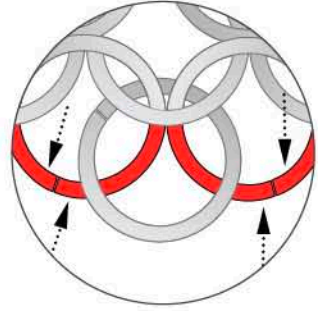
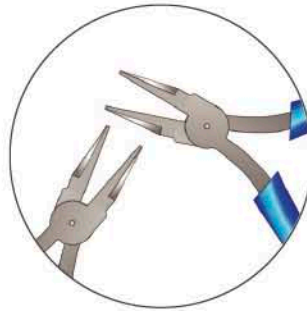
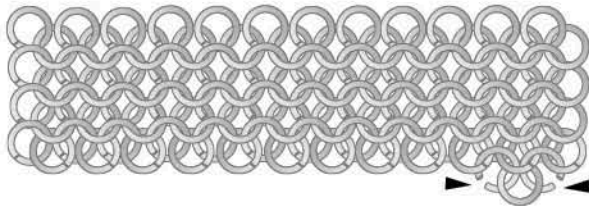


STEP 5

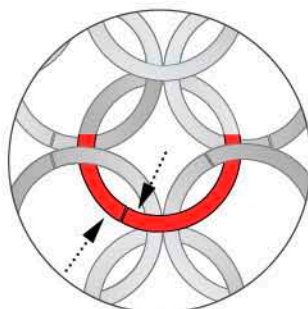
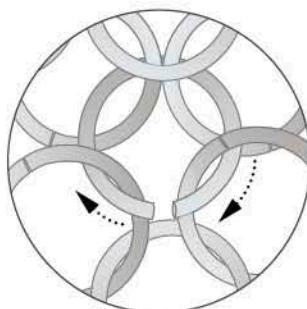
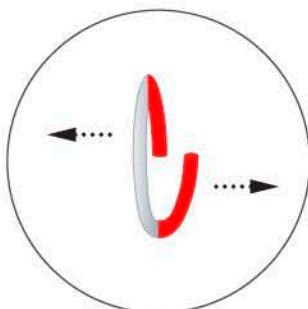
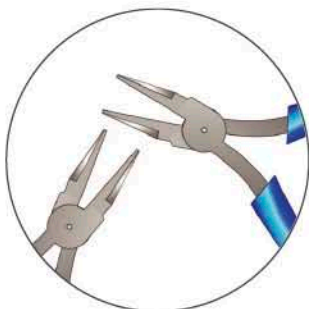
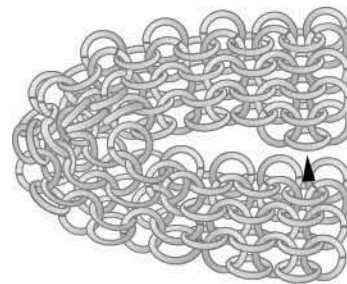
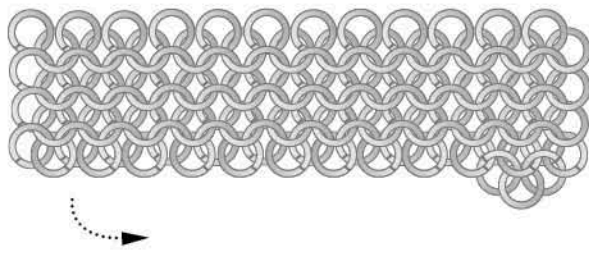
Repeat step 4 x4:



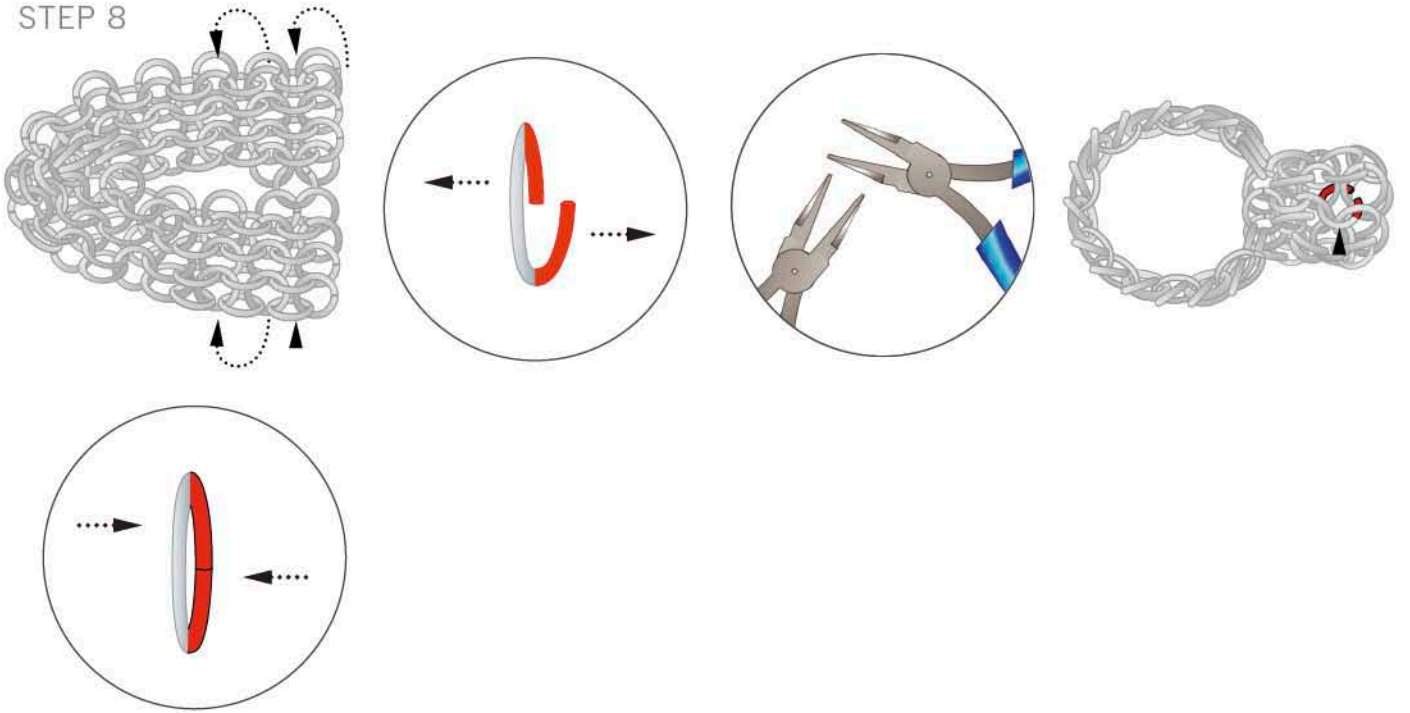
STEP 6



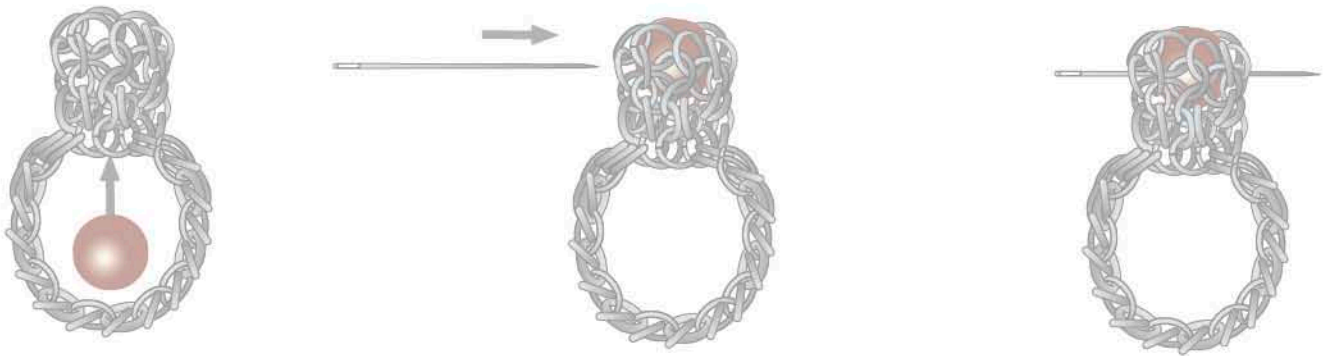
STEP 7



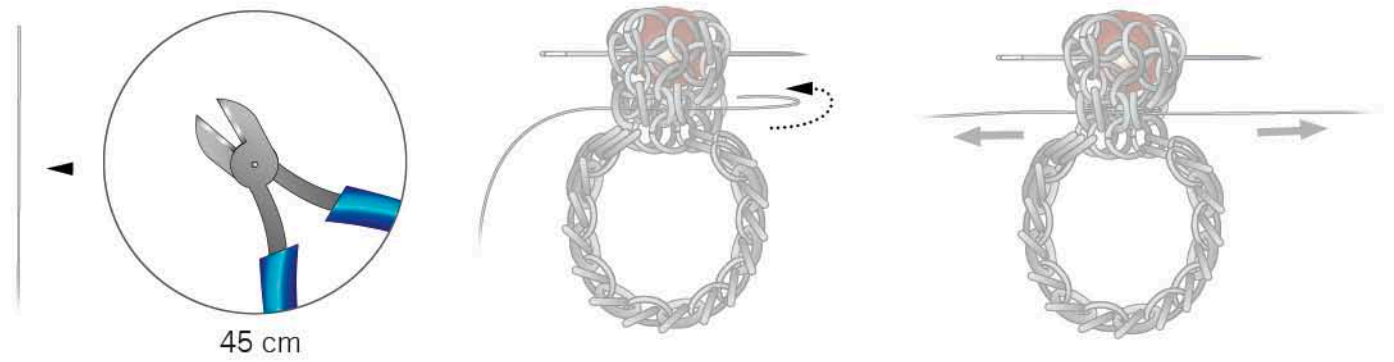
STEP 8



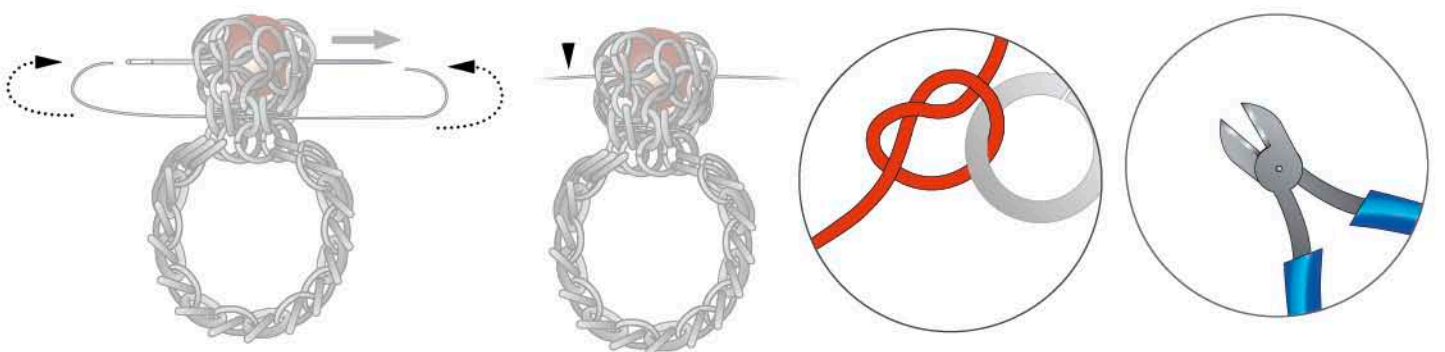
STEP 9



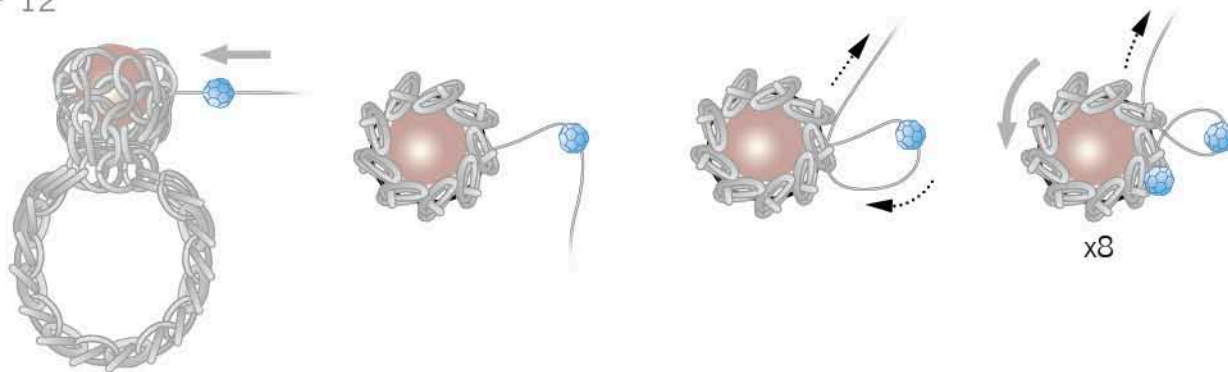
STEP 10



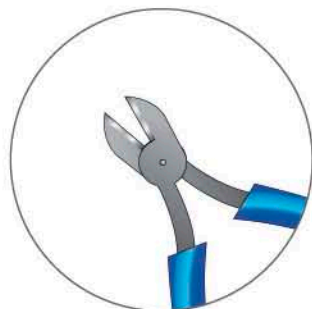
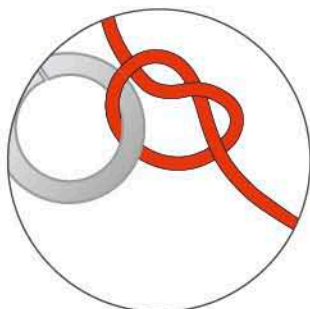
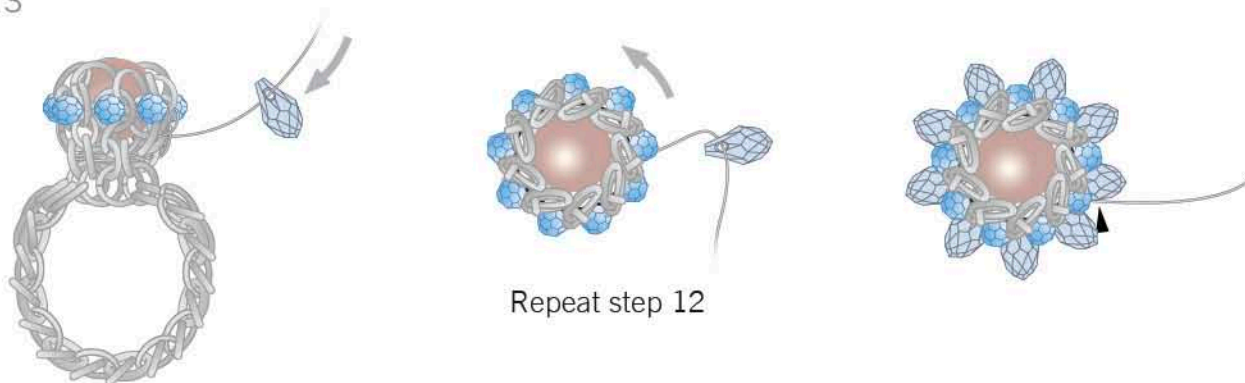
STEP 11



STEP 12



STEP 13



CREATE YOUR STYLE with CRYSTALLIZED™ – *Swarovski Elements* Design Project
Summer Holidays Chain Mail Ring

- STEP 1: Open 75 jump rings (6 mm) sideways with flat nose pliers.
- STEP 2: Slide 4 closed jump rings onto one open jump ring and close.
- STEP 3: With another open ring pass through 2 closed rings, add 2 more closed rings, and close the open jump ring. Repeat this step 9 times.
- STEP 4: Start adding a new row of rings. Take an open ring and pass it through 2 rings as you see in the illustration then close. Repeat eleven times.
- STEP 5: Repeat step 4 four times so that you have 4 rings in each column.
- STEP 6: On one end of this chain add 3 more rings. See illustration for positioning.
- STEP 7: Turn chain to connect both ends. Open the ring in the middle of the 3 that were added in step 6 and pass it through the corresponding 2 rings of the other side and close it (see magnifier in illustration).
- STEP 8: Open the jump ring which is marked with an arrow head in the first picture of the illustration. Turn to form a ring and attach the open jump ring onto the 2 corresponding rings on the other edge and close the ring.
- STEP 9: Place the CRYSTALLIZED™ Crystal Pearl article 5810 10 mm Crystal Platinum Pearl in the setting as you see in the illustration. Temporarily attach it in the right position by passing a needle or straight wire through the middle of the pearl.
- STEP 10: Use another piece of wire and pass it through all rings underneath the pearl. Both wire ends should be about the same length. Pass one end through the 4 rings again. You can adjust your ring size by pulling both ends of this loop!
- STEP 11: Pass both ends of the wire through the Crystal Pearl replacing the needle (from opposite sides – see illustration). With one wire make a knot around a jump ring and cut the rest of this wire end off.
- STEP 12: Slide on one CRYSTALLIZED™ Bead article 5000 4 mm Air Blue Opal onto the other wire end and pass it through the jump ring next to the bead (see illustration). Repeat this step 8 times (all around the ring).
- STEP 13: Slide one CRYSTALLIZED™ Pendant article 6007 9x5 mm Light Sapphire onto wire and repeat step 12. When the row is finished, make a knot with wire around a jump ring and cut end of wire off.